



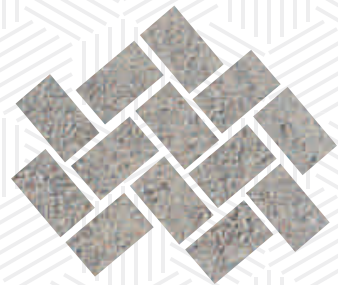
AFFINITY BUILDERS & PROMOTERS

PR-7, Airport Road, Zirakpur | www.affinitygreens.com

www.mantra.com

CONCRETE
GREEN
HABITAT





CONCRETE



Though a very unromantic word, it is the foundation, the strength and the very base of everything ‘We Build’. As human life evolved, we learned to make stronger and amazing structures and we called them homes! Affinity Greens is built on the same qualities as concrete, we provide strong, sustainable homes that generations to come will admire.



GREEN



A clichéd term these days. With each passing day, humans are learning a new meaning of this word. The very word starts a conversation without any effort. We all are seeking to live in greener spaces and thats what is “The Thing”. At Affinity Greens, we provide verdant spaces to live and flourish.



HABITAT



In ecology, a habitat is the kind of natural environment in which a particular species thrives. It is characterised by both physical and biological features. A species' habitat is that place where it can find food, shelter, protection and mate for reproduction. Affinity Greens is designed to breathe life into its residents, with the highest quality of architecture which will be called homes.



AFFINITY GREENS



*Affinity means a natural liking for
or attraction to a person, thing, idea etc.*

A project conceived with a passion to make a
harmonious blend of concrete with the much
sought after green cover and understanding of
a perfect habitat.

For us, its about Affinity for quality living!

FROM DUST TO DREAMS

Successfully completed projects

● Where we began



● When we took the story ahead



● Carving a niche



● Achieving a Milestone



Affinity Builders & Promoters is a team of zealous, strong minded and ingenious individuals with an extensive experience in the field of Commercial and Residential Real Estate.

Their fondness for luxury and affluence made them foray into this field so as to provide the patrons a taste of royalty with specially designed homes and business areas.

With a promise to deliver safe and secured homes, with negligible maintenance and increased durability, the group aims at providing an experience of a lifetime to all its customers.

The company believes in adhering to remarkable ethical practices while following a well-defined process.

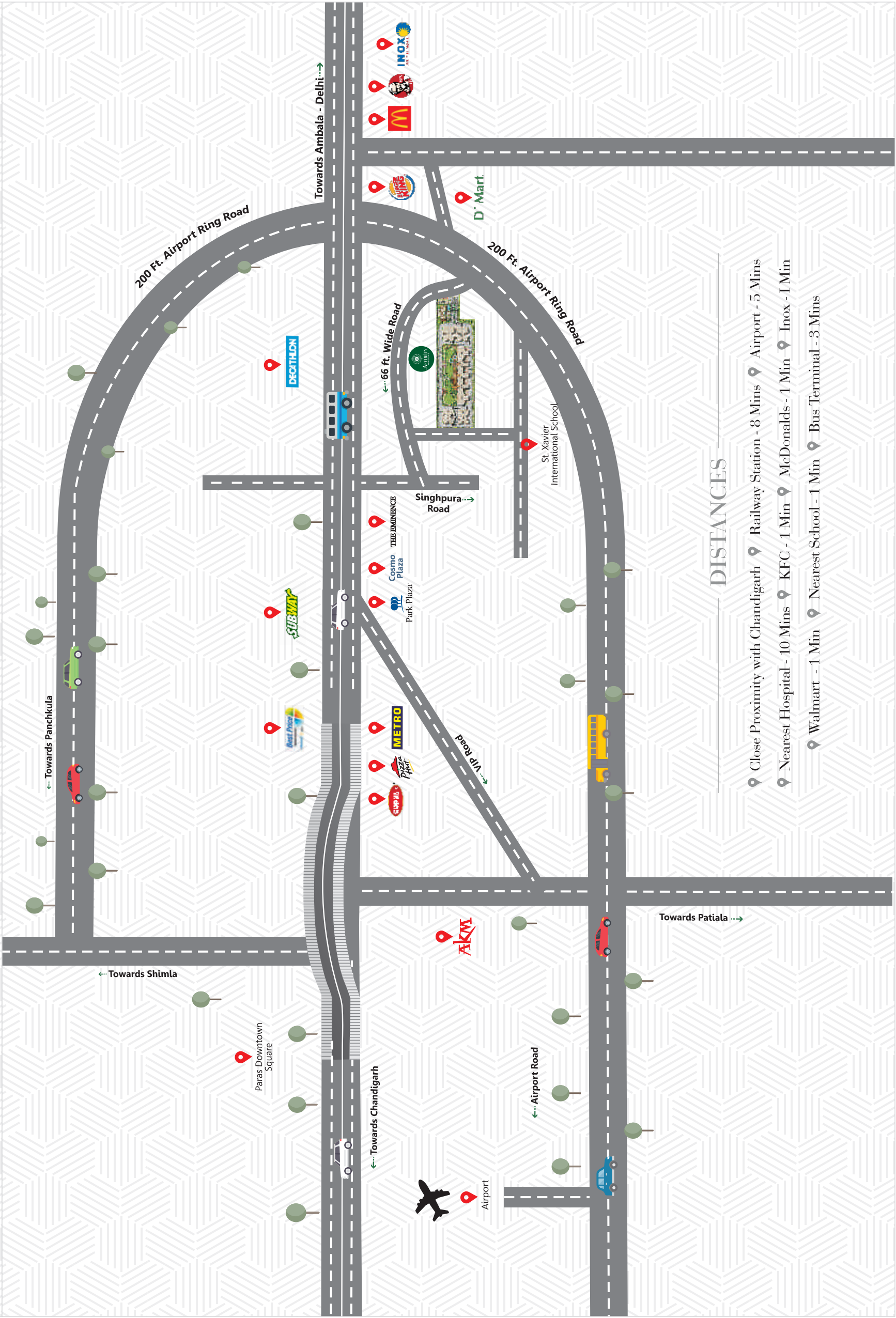
Love, Patience & Determination helped us do it.

THE PLOT

PR-7, The New Life Line of Chandigarh

As the idea for Affinity Greens started to evolve, we were seeking a “Perfect Plot” to build homes that resonated with our ideology of providing the best in class, to our residents. It was really important that “our piece of land” was the best possible option, at least in class. Affinity Greens is located at the most important turn of Zirakpur. The moment you step out, your feet are on the highway. The choice remains yours, whether you want a laid-back trip to The Shivaliks, the fields of Punjab or the hustle bustle of Delhi.

Our Plot is best located to offer Affinity with all directions!





TOWERING
MAGNIFICENCE

ABODE OF WARMTH





THE ARCHITECTURE

It is said, Rome was not built in a day. As we struggled to bring out the best in Affinity Greens, our team of Architects worked tirelessly to plan and execute the minutest detail in terms of design; whether from the Roman era or the modern architecture of this day. Its design is conceived by one of India's Leading Architectural firm - IE Design, Delhi. The design of our buildings will ensure you have the Affinity of Light, Air and Comfort at every level and each corner. The materials we shall choose will reassure our Affinity to Green, as we call it Affinity Greens.

RESIDE IN SPLENDOUR





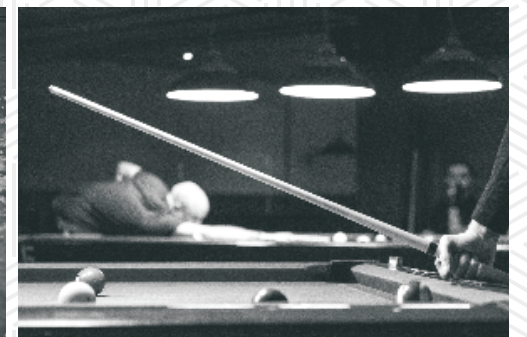
THE EDGE



Team ABP knows the importance of Leisure. As we build this project of our dreams, we are also commissioning “Club Epicuria” a testimony of our commitment for an excellent lifestyle for those who have the skill to enjoy social life and have Affinity to class. At Epicuria, patrons will get to enjoy a Fully-Equipped Gymnasium, a Kid’s Play Area, a Party Hall and much more.

Other allocations for Leisure

Pool Table | T.T | Gym | Party Hall | Indoor Games | Swimming Pool | Library | Yoga Room





Club Epicuria

THE MASTER PLAN



Its a challenge to channelise a piece of land into a liveable habitat of choice.
We worked with Affinity to make it a perfect one, keeping 70 percent area covered in greenery and laying each tower with a Vaastu compliant design.
Direction was not a priority, but the very basis of
“The Master Plan”. A closer look at this master plan can convince an eye for detail. Our team is ever ready for any question for our Affinity to Excellence.

DISTRIBUTION OF TOWER / FLATS	
Tower A & B	3BHK Elite
Tower C&G	4BHK
Tower D, E & F	3BHK + Servant Room
Tower H	2BHK
Tower I	3BHK

LEGEND

- (1) Central Park (2) Sports Arena (3) Skating Rink (4) Kids Play Area (5) Mini Basket Ball Court (6) Deck (7) OAT
(8) Speaking Tree / Meditation Corner (9) Gazebo (10) Landscaped Mounds (11) Jogging / Walking Track



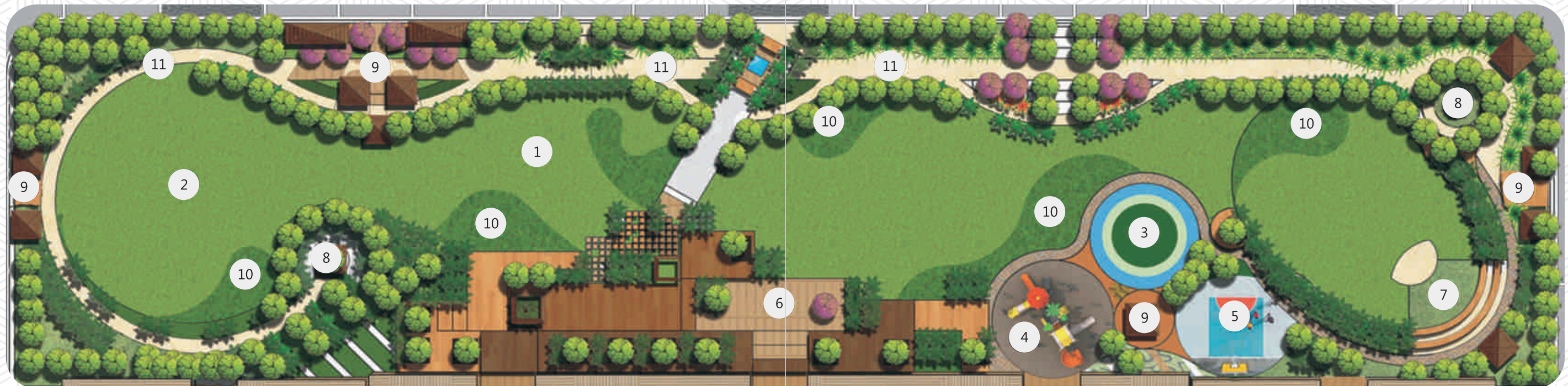
TOTAL AREA COVERED - 6 ACRES

THE LANDSCAPE



1. **Central Park** – At Affinity Greens, we believe in providing our residents a place that is ideal for a residing. Our project is designed to provide each one a feeling of living in the lap of nature with lush green parks surrounding the entire premises and a Central Park that breathes life into each resident.
2. **Sports Arena** – Living in an urban setting takes away our energy. Everyday commuting, daily routine, eating habits are responsible for making us unhealthy. At Affinity Greens you have the provision to play a variety of sports to keep diseases at bay and also making it easier to take up your favourite sport.
3. **Skating Rink** – Put on your roller skates and zip away to fun. Nothing beats the blues like a good time in the skating rink.
4. **Kid's Play Area** – Happy kids are healthy kids! At Affinity Greens, an area is designated for the young ones to enjoy with their friends.

5. **Mini Basket Ball Court** – Spend your weekend playing a friendly game of Basket Ball along with friends or family.
6. **Deck** – Admire the beauty of the sprawling premises sitting on the Deck.
7. **Open Air Theatre (OAT)** – Enjoy a play or any event in the open-air theatre on a winter evening and revel in the beauty of the premises.
8. **Speaking Tree/ Meditation Corner** – Spend some ME time, feel alive sitting in meditation and awaken your senses.
9. **Gazebo** – Forget your worries and relax in the beautifully designed gazebos.
10. **Landscaped Mounds** – Visually appealing landscaped mounds add an edge to the Central Park.
11. **Jogging /Walking Track** – Keep fit by going for a sprint on the track, you can also take a leisurely evening walk with your spouse for spending some quality time.



TOWERS OF AFFINITY



Each tower at Affinity Greens is designed in a way to offer you an amazing view of the sprawling premises. Make a choice between 2, 3 & 4 BHK apartments that are designed to perfection which will make Affinity Greens a “New Address for Dream Living”.

2 BHK

UNIT COVERED AREA - 880.00 SQ. FT

CIRCULATION - 160.00 SQ.FT.

BALCONY - 210.00 SQ. FT

TOTAL AREA - 1250 SQ.FT.



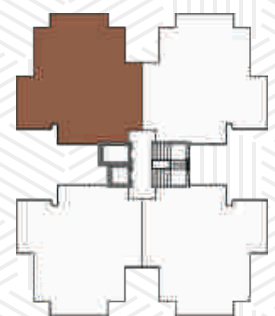
3 BHK

UNIT COVERED AREA - 1072.00 SQ. FT

CIRCULATION - 158.00 SQ.FT.

BALCONY - 210.00 SQ. FT

TOTAL AREA - 1440 SQ.FT.



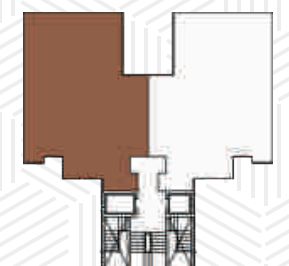
3 BHK + SERVANT

UNIT COVERED AREA - 1305.00 SQ. FT

CIRCULATION - 315.00 SQ.FT.

BALCONY - 295.00 SQ. FT

TOTAL AREA - 1915.00 SQ.FT.



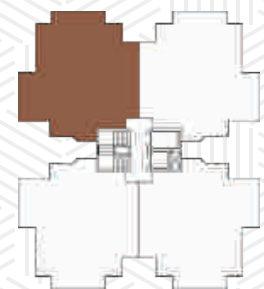
3 BHK ELITE

UNIT COVERED AREA - 1113.00 SQ. FT

CIRCULATION - 182.00 SQ.FT.

BALCONY - 280.00 SQ. FT

TOTAL AREA - 1575 SQ.FT.



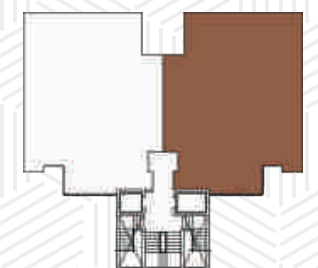
4 BHK

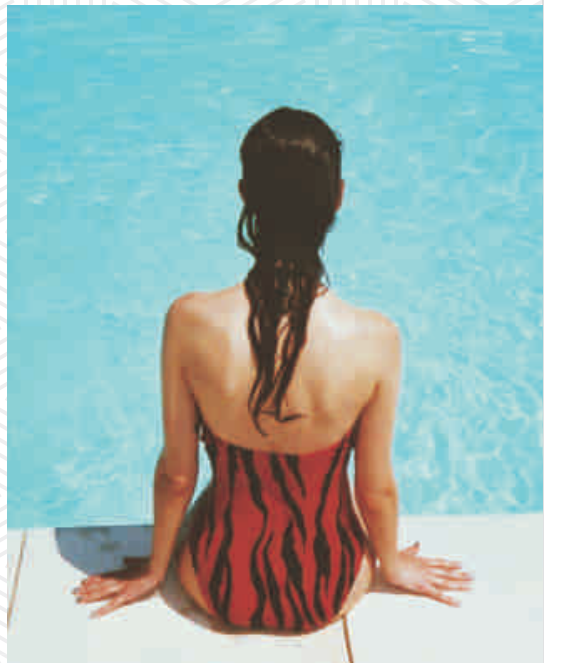
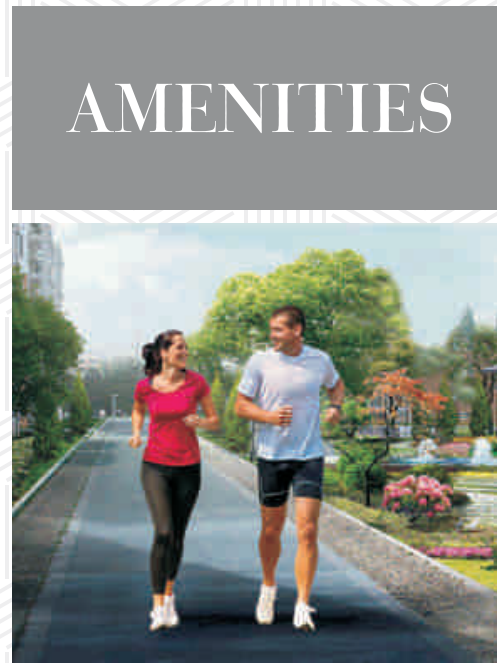
UNIT COVERED AREA - 1580.00 SQ. FT

CIRCULATION - 323.00 SQ.FT.

BALCONY - 362.00 SQ. FT

TOTAL AREA - 2265.00 SQ.FT.





AMENITIES



STATE-OF-THE-ART TECHNOLOGY

SECURITY

- Gated Community With Access Control At The Main Gate, Basements, Tower Entrance Lobbies And Lifts

ELEVATORS

- Centrally-monitored CCTV Surveillance In The Entire Complex,

Wi-Fi

- Premium Elevators In Each Tower
- High Speed Wi-Fi In The Entire Building
- Intercom Connectivity



SAFE, SUSTAINABLE & FUNCTIONAL DESIGNS

FIRE SAFETY

- Synchronized Fire Fighting System Equipped With Fire Alarms & Public Address Systems, as per the latest National By-laws And Codes

PARKING

- Ample Parking Space
- Designated Covered Car Parking For each flat



ALL ROUND COMFORT

AMENITIES & FACILITIES

- A 24 x 7 Professional Estate Management Company that responds to Maintenance Issues
- Covered Arrival Entrance Porches for Protection from Adverse Weather condition
- 24 x 7 Power Backup



ECO-FRIENDLY LIVING

ENVIRONMENT FRIENDLY

- Rain Water Harvesting
- Metered Recycled Water From STP
- Energy Efficient Lighting Throughout The Complex

SPECIFICATIONS



Our residents are our top priority. Our apartments are designed to make each resident feel alive and have a feeling of living in their dream abode. Usage of top of the line raw material in our apartments makes us truly world class. At Affinity Greens, our customers deserve nothing but the best.

LIVING / DINING / FOYER / FAMILY LOUNGE

Doors	Laminated Flush Doors / Skin Doors
Flooring	Vitrified Tiles
Walls	Acrylic Emulsion Paint Finish
External Windows/Glazings	UPVC/ Powder Coated Aluminum

MASTER BEDROOM / DRESS ROOM

Doors	Laminated Flush Doors
Flooring	Vitrified Tiles
Walls	Acrylic Emulsion Paint Finish
External Windows/Glazings	UPVC/ Powder Coated Aluminum
Wardrobes	Modular Wardrobes of Standard Make in all the bedrooms

WASHROOMS

Walls	Glazed Tiles Upto Door Height & Acrylic Emulsion
Flooring	Anti Skid Tiles Of Premium Quality
Doors	Laminated Flush Doors/Skin Door
Fitting	Branded Chinaware & CP fittings

KITCHEN

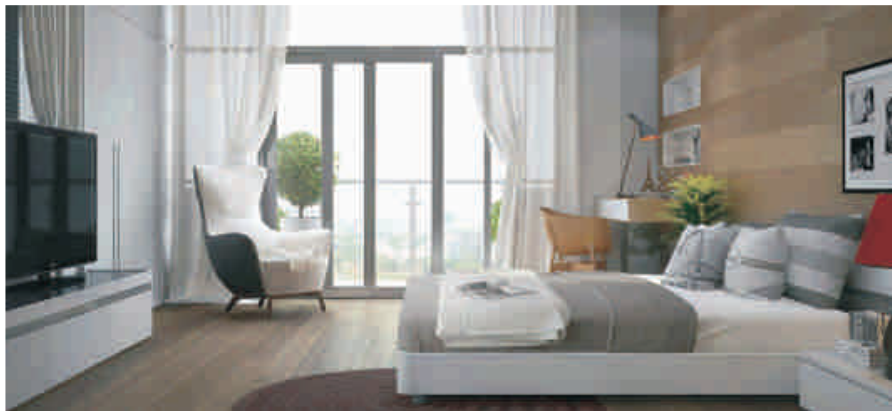
Flooring	Premium Quality Tiles
Walls	Premium Quality Tiles 2 ft. above counters & Acrylic Emulsion Paint
Fixtures	Premium Quality CP Fittings & Double Bowl Sink
LPG	Pipeline Supply

STAIRCASE / COMMON CORRIDORS

Walls	Acrylic Emulsion
Flooring	Granite / Marble
Others	MS Railing

BALCONIES

Flooring	Anti Skid
Others	MS Railing



STRUCTURE

Earthquake Resistant RCC Frame Structure

ELECTRICAL WORK

Provision for Split ACs
Concealed Electrical Wiring with Fire Resistant Wires
Adequate Plug Points

THE NEIGHBOURHOOD



Chandigarh

At a distance of 13 kilometres from the Union Territory, Affinity Greens is ideally located at PR-7 which isn't too close to the hustle bustle, at the same time not too far away.

Mohali

The buzzing town of Mohali is only a short drive away from our location. Enjoy a gripping game of cricket at the IS Bindra International Cricket Stadium, which is few kilometers away from Affinity Greens. Students studying at ISB and IISER are also at an advantage.



Transit Hub (Airport, Railway Station, Bus Stand)

If you are someone who is constantly on the go, this location is ideal for you. International Airport and Railway Station are only a few kilometres away from Affinity Greens, so that you don't have to worry about missing your or your loved ones' flights and trains.

The Eminence

Our previous best selling project, The Eminence got an overwhelming response from everyone. At Affinity Greens you are just a stone's throw away from The Eminence.



Eating Joints (McDonalds, Burger King, Subway, Pizza Hut, Gopal's)

Hunger pangs come without any warning. Don't fret, at Affinity Greens you are only a few meters away from your favourite fast food joints. Wish to have a hearty meal, or celebrate a small occasion with close friends? Just hop in your car and you will reach your destination in a few minutes.



Grocery/ Daily Needs Store (DMart, Best Price, Metro)

Groceries are an essential part of our lives and you should never run short of important items in your home. Living at Affinity Greens, gives you the edge of being close to the best grocery and wholesale stores.

Shopping Malls (Elante, Cosmo Plaza, PDT Square, Decathlon, Inox)

Shopping is fun, but with the increasing traffic, driving to your preferred location takes a toll. While living at Affinity Greens you can easily find what you are looking for without being stuck in traffic. If you are a fitness junkie and like all things sporty, then our location is ideal for you. Get your hands on the best sports gear at Decathlon.



Hospitals (PGI, Alchemist, Fortis)

God Forbid if a medical emergency arrives, Affinity Greens is a stones throw away from the best hospitals.

Resorts / Hotels (AKM, Park Plaza, Ramada Plaza)

Park Plaza & Ramada Plaza – Celebrate important occasions at beautiful locations and also devour sumptuous food.

AKM Resort – Weddings are a lot of fun, you get to meet family and spend time with loved ones, live close to one of largest wedding palaces of the region.



Schools (St. Xavier International, DPS, Manav Mangal)

Your kids will thank you for choosing Affinity Greens which is so close to Chandigarh's leading schools.



THE DECISION



To buy a house is extremely crucial. One waits for years to reach a point in their life when they can invest in a house. We promise to provide you with a place you can call HOME. A place that will be admired by generations to come.

A dream abode awaits you...



AFFINITY
GREENS

New Address for Dream Living...